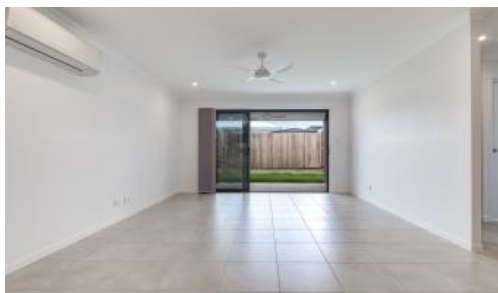


LEASED



7 Steiner Crescent, Caloundra West



DORA, IT'S TIME TO EXPLORE AURA!

This simply gorgeous home will definitely impress all who enter and will be snapped up quickly! Set in the fantastic newly developed Bell's Reach, we think this property is extra-special. From its stunning street appeal to deluxe finishes from top to toe, this is a fantastic opportunity to move into an upmarket property with the perfect sized, easily managed and very private garden.

Well-positioned to Caloundra and area beaches, approximately 1 hour to Brisbane for commuters and close to great schools and good selection of shops/conveniences, very close to Kings Beach & Walking distance to parks!

FEATURES WE LOVE:

- Big bright entry foyer
- Light-filled open plan living/dining area with fan and air conditioner

 3  2  2

Price 1928.571
Property Type Rental
Property ID 1004

Agent Details

Code Property Group - 07
5438 3444

Office Details

Code Property Group
9/15 Nicklin Way Minyama,
QLD, 4575 Australia
07 5438 3444

code
PROPERTY GROUP

- Three bedrooms, master with swish contemporary ensuite
- Top of the range kitchen
- Living room opens onto totally private covered patio and easy-care level lawn
- Contemporary neutral decor
- Very well designed with the environment in mind
- King-sized auto double garage (Parking bay out the front)

****NO PETS, SORRY****

****12 month lease, preferred****

****Property is water compliant, tenants to pay full usage****

****Booking an open home is essential, please view our website at www.codepg.com.au - Click on Rentals - Click on the property you would like to view and select 'Book inspection'. Please ensure you register your details****

The above information provided has been furnished to us by the vendor/s. We have not verified whether or not that information is accurate and do not have any belief in one way or the other in its accuracy. We do not accept any responsibility to any person for its accuracy and do no more than pass it on. All interested parties should make and rely upon their own inquiries in order to determine whether or not this information is in fact accurate.