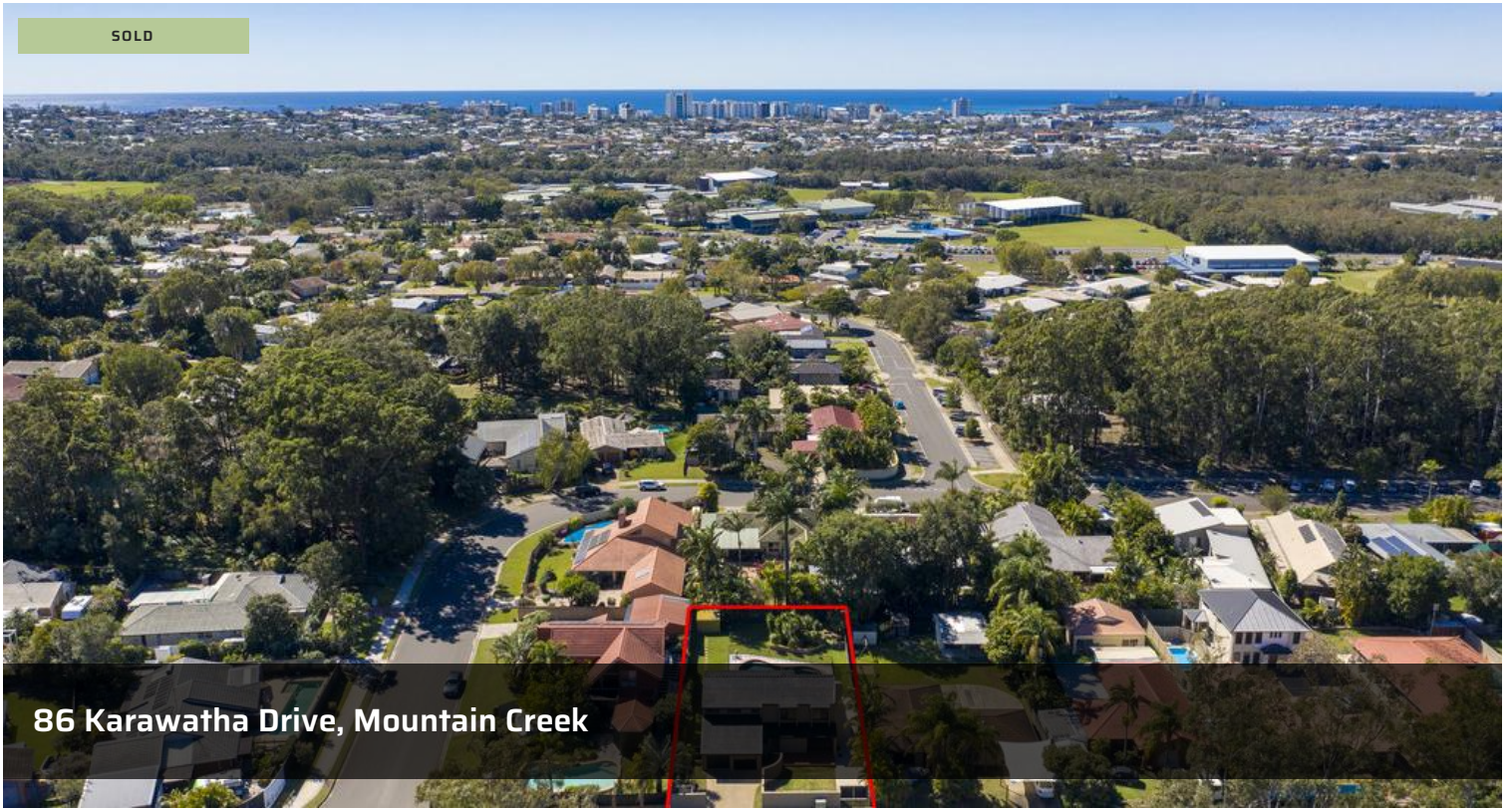


SOLD



86 Karawatha Drive, Mountain Creek



Do NOT Wait Another 20 Years

Be quick to secure this fabulous family home in the heart of popular Mountain Creek; tightly held for over 20 years, on a large 831m<sup>2</sup> block with north-east facing alfresco entertaining overlooking inground pool, and plenty of space for the kids and pets to play it's a stand-out!

Over two levels, the home is complete with front timber deck, four bedrooms, two modern bathrooms plus powder room on ground level, office with built-in study nook, light-filled kitchen with servery to rear covered patio, separate living areas, generous sized laundry, double lock up garage plus gated side access to bring in a trailer/boat.

Long-term owners have taken great care of this much-loved property and have done renovations and made improvements over time. Features include ceiling fans, eco burner fireplace with stone feature in lounge, stainless steel appliances, timber look

 4  2  2

**Price** SOLD  
**Property Type** Residential  
**Property ID** 1185

#### Agent Details

Ben Wilson - 0407 584 378

#### Office Details

Code Property Group  
9/15 Nicklin Way Minyama,  
QLD, 4575 Australia  
07 5438 3444

**code**  
PROPERTY GROUP

flooring in lounge/dining, separate shower and bath in main bathroom, generous storage, and lock-up garden shed.

The downstairs area is where all the entertaining happens, with both living areas flowing to external areas, there'll be plenty of twisting by the pool when summer comes - fire up the BBQ, chill the drinks, chop up the salad, put on your play-list, and let the joie de vivre (enjoyment of life) commence!

Easy-care inside and out, and fully fenced for privacy and security; this is the perfect home for the busy modern family that love to get out and about, but also spend quality time at home. There is no immediate money needing to be spent; it's ready and waiting for its next occupants to move in and create their own cherished memories.

Conveniently close to many major amenities, just over 5 minutes drive to Mooloolaba Beach, shops and cafes, just a 7-minute drive to the university, 12-15 minutes to the Oceanside Hospital precinct, 15 minutes to Sunshine Plaza, and with quick easy access to the motorway the location is family-friendly. Both Mountain Creek Primary and High are within walking distance, as is Mooloolaba TAFE, bus stop, local parks, and aquatic centre; Headland Golf Club, Mountain Creek shops including supermarket, and Mountain Creek Tavern are just a short two-minute drive. Location shines!

Buy today and you can be moving in over spring ready for an amazing summer of good times, sunshine and laughter. Hurry to secure this one, first time to market since 1998 you'll see why!

- Fabulous family home on 831m<sup>2</sup>
- Fully fenced, private & easy care
- 4 bedrooms, 2.5 bathrooms
- Office + separate living areas
- Light-filled kitchen with servery
- North-east facing patio at rear
- DLUG + gated side access

- Tightly held for over 20 years
- Has been renovated over time
- Walk to local schools, shops & parks
- Quick easy access to motorway
- Less than 10 mins to Mooloolaba
- Plenty on offer to appeal to all!

*The above information provided has been furnished to us by the vendor/s. We have not verified whether or not that information is accurate and do not have any belief in one way or the other in its accuracy. We do not accept any responsibility to any person for its accuracy and do no more than pass it on. All interested parties should make and rely upon their own inquiries in order to determine whether or not this information is in fact accurate.*